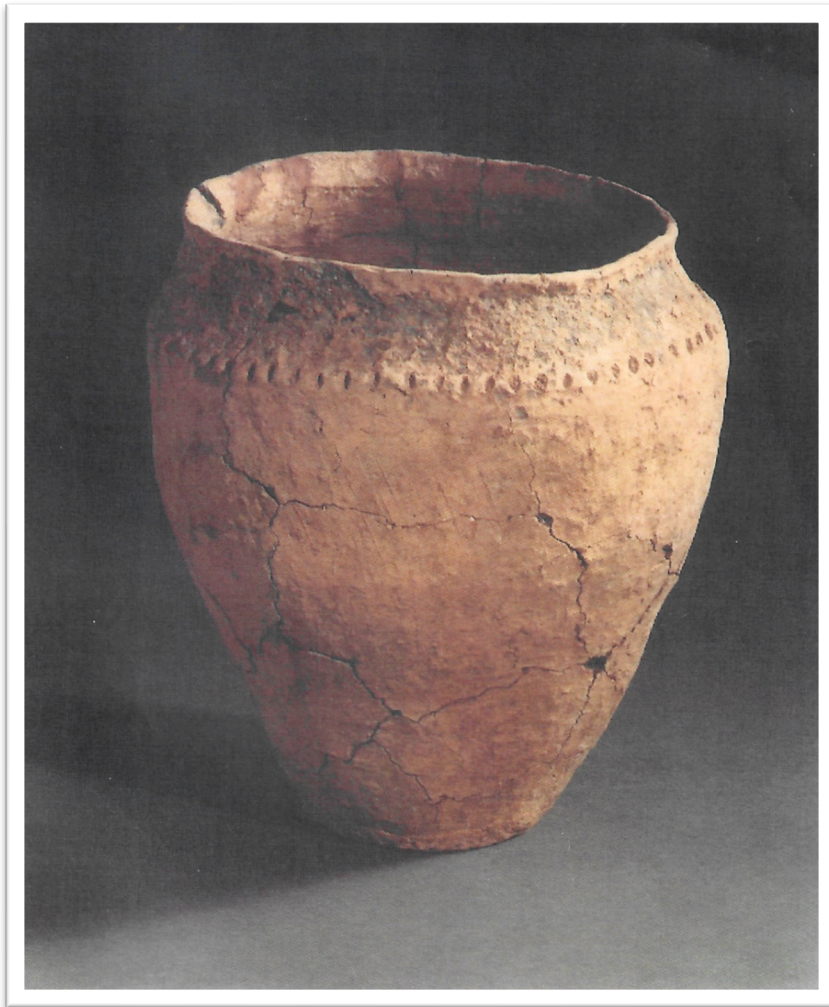


SEMER RECORDS



TO THE GLORY OF GOD
AND TO THE MEMORY
OF THE MEN OF SEMER
WHO LOYALLY AND FAITHFULLY
LAID DOWN THEIR LIVES
FOR THEIR COUNTRY
IN THE GREAT WAR
1914 — 1918

FROM 1500 BC



Why now

My wife Jill and I had spent many enjoyable years studying local and landscape history. With the help of the older generation in our village, the archives and documents we have collected and transcribed, we have enjoyed and would like to share Semer's history with you.

Pictured above: The Urn Found in 1938 after 3500 years in the ground.

How it Started

One day in the early 1990's an older lady, a friend of mine, stopped me and said "young Thorogood you are an idle person your village needs you".

I found out that I was to be a village recorder. Pam Oldroyd was educated at the LSE, very left wing and taught me a lot about local history. An international women's organisation asked her to give a lecture in Norway and Pam being the person she was did so but gave it in Norwegian. The King of Norway who was in the audience congratulated her and she had to admit that she had learnt enough just for the speech.

With Pam at my shoulder, I have endeavoured to capture as much village history as possible, I am not an academic and may have misrepresented some facts on the way. I had tried unsuccessfully to form a Semer history group and felt instead that what I had discovered should be recorded so that others in the future may make use of it, criticise, and add to my effort.

From the Bronze Age

In 1938 an urn 14.5" high, containing the ashes of a female roughly in her mid twenties was found at Dairy Farm where gravel was being dug near to the river (map ref TM00504659). The urn is now in the Ipswich Museum, the British Museum dated it around 1500 BC and full details can be found in the SIAH volume 29 of 1961 page 175.

I discovered arial photographs taken by Cambridge University in 1976 of crop marks in First Golder and so with my wife Jill, in 1996, we field walked a large section of this land by Dairy Farm Lane and found many shards of flint from the knapping that took place around the habitation seen in the photos and around the same date as the urn, found near to the later water mill.

We found no evidence of arrow heads or polished flint, but it is likely that these would have been lost when hunting, then found, re-knapped and used again. As we walked higher up the slope burnt flint started to show, these are known as "pot boilers", as early man's pottery was of a poorer quality, he use to heat his flint on a fire and when hot, place into his pot of cold water, done time and again this would whiten the flint and leave a crazed pattern on its surface, a good indication of an early settlement. This is an ideal area to make a settlement for one had a river crossing and was high enough above the water level to avoid flooding. In 1890 a mould for making socketed bronze axes was found on the hillside on the other side of the river.

The monument records show other early sites around Semer, but the concentration is in this field on the corner of Dairy Farm Lane and the main Bildeston Road by the bridge.

An unusual one-acre plot

Diagonally opposite from this site across the road bridge is an area on which tithe has never been paid. I sought the advice of David Dymond and he thought from my documents that this freehold land was a portion of old Nedging Parish on which a medieval free chapel had been built. Many pieces of land that had their origins in the past possibly before the Norman Conquest were still recorded on Tithe Apportionments in the 19th C, certainly from a period when parishes were being defined, in fact Semer today is laid out in a not unsimilar fashion to those around AD 800.

From documents in Hadleigh Archive this was the site of the chapel of Mary Magdalen and St Catherine the Virgin in the 15th C and would have been acquired by Dr Pykenham with other plots to serve his twelve alms-houses in George Street, Hadleigh. In the church terrier of 1627 mention is made of a Chapel Yard belonging to Nedging and in a rental and survey c1500, it states in 16th year of Edward the 3rd "item upon Chapelbridgewent 10 acres a half and 5 perches". Chapel Field which was Glebe land measured 10 acres 3 roods 18 perches in 1838, Peter Northeast also found references to this area from wills in the 15th C. In 1988 during building work at Hill House human bones were found at the rear of the property and West Suffolk Hospital stated they were over two hundred years old.

Jumping forwards a few centuries, John and Martha Grimwade's son William, born 1701 marries Eliza and has twelve children. In 1734 the Manor Court admits William to a premises, the rental two shillings a year, in 1765 he surrenders his lands out of court, Joseph Clarke and William Studd represent him, he is described as a blacksmith and copyholder. John his son is then admitted to court "in his own proper person" and granted by the steward the premises that were his fathers. John lives to eighty-eight years old and dies 1824, his will describing him as a gentleman in 1823, the property left to his nephew William. The messuage and tenement with the shop and other buildings, yards, gardens, orchards, hereditaments and appurtenances whatsoever to the same belonging or

appertaining part freehold and part copyhold. William is already in occupation and has married Sarah, in 1834 she undergoes an examination to a certain document. William and Sarah drew up a deed with Thomas Bakewell, a farmer in Bildeston, Rev J Y Cooke, Chelsworth, Rev George Cooke of Semer.

James Young Cooke becomes Semer's rector in 1838, as you may gather in my writing this is a person I rather admire, he is wealthy, astute, a big money lender and I believe does a lot for the village. I have included this piece of history for it seems to be the entrenchment of the new rector in the village and the possible move of the blacksmith to Ash Street. It was a little difficult linking up the Grimwade's, they did well in one hundred and thirty years.

Looking back

On the Tithe Map and if standing in the centre of the village there is an indication of the old open field system that lay between Buckles farm offices and Old Tiles at the top of Crouch Hill, turning around and looking towards Hadleigh from beyond Gate Farm lay the ancient common lands, from the gate giving the farm its name look diagonally across to the end of Shoulder of Mutton Lane where one will find Clap Gate, these are entrances to the common. Turning one's head to the right and looking beyond the church at the edge of the village lies Semer Wood, smaller now than the forty acres that it used to be. With the crossing over the river, either ford or bridge, the rectory, church and Manor, the butts between Manor and wood we can still recognise the village as it was in medieval times. Our footpaths are much older, place the footpath map alongside the Monuments Record and one can see the paths joining up settlements, ring ditches and sheep folds.

The mere by the church goes back way into the periglacial period, Oliver Rackham from Cambridge University wanted to take core samples to research several things he was interested in. He got extremely worried when told of the attempts of a fishing interest putting large machinery in the mere to clear silt, a lot happier when told that it sank and needed a fifty ton pull to get out. It reminds me of mothers telling their children that the mere was bottomless and do not go there. It seems that it was well stocked with fish, which must be surprised when Church Meadow floods and gives them access to the river Brett. Only a short distance downstream towards the road bridge the kingfisher's nest.

I have mentioned butts rather hopefully for it seems an ideal place for the village men to practice archery as decreed in 1388 however though the name appears on the tythe map, butts can have other meanings. It could mean land covered with stumps, section of a common arable field, shorter than other pieces in the same furlong i.e., because of irregular shapes of the field boundaries or two furlongs meeting at an angle. The interesting one of course being an area for archery practice, ours appears to fit the right spot in the village near to the church whilst another area we come to later is for unruly folk who are kept as far away from the church as possible, that is the medieval sports ground.

A particular of lands of the Manor of Semer measured in the 16th year of King Edward the 3rd, AD 1343 (Originally in Latin)

Ballard Field

In the shortland abutting at the one head upon the checker and the other head upon the cowfenne – one-acre 3roods and a half

Between the shortland and the overwente 7 acres 3 roods and 3perches hedge

Between the overwente and the water furrowe and the roughhedge 7acres half a rood and 2 perches

Between the roughhedge and the pourcepet 11 acres and a rood

From roughhedge and Roblets grove 14 acres a half and 14 perches

Item upon Roblets Grene 2 acres and a half

Item upon blackwente 6 acres half a rood and 15 perches an half and one perche

Item upon the wrongwente 11 acres a rood and a half

Item upon ffolefetwente 9 acres a half and 7 perches

Item upon lanlonde on both sides of the hedge 5acres a rood and 5 perches

Item upon the shepwente 6 acres an half and one perch

Item upon the bowleshead 8 acres 1 rood and 15 perches

Item upon Stilewent 12 acres a rood and 3 perches

Item upon the Goryande to the Checker 6 acres half a rood and 4 perches

Item upon Chapelbridgewente 12 acres and a half 5 perches

Item upon Milne halk 4 acres one perch and a half

In this field 140 acres 3 roods and a half 6 perches and a half

Woodfield

In Radeonde wente 7 acres 3 roods and 4 perches

In gardenwente 4 acres 3 roods and 4 perches

Item from the gate of the Manor to the water furrowe upon the Netherwente 6 acres 3 roods and 37 perches

Item between the said water furrowe and the woodway 9 acres one rood a half one perch and a half

Item in the middlewent from Mapells to the water furrowe 7 acres 3 roods and 31 perches

Item upon longlonde between the woods 6 acres one rood and a half

Item upon the shortlande abutting upon the first little wood 5 acres and a half

Item upon the said Littlewood to brokeplowe hell 4 acres and 28 perches

Item from peaselade to the water furrowe 5 acres and 10 perches

Item from Radlonde hell to brokeplowe hell 13 acres one rood and 34 perches

Item upon Cleypetwente 9 acres and 17 perches

Item upon hedgewente 4 acres 3 roods an 4 perches

Item upon Smith lands one acre one rood

Item upon Gorylande 2 acres 3 roods 4 perches

Item upon the Radwente with 5 butts next the oak 6 acres one rood

Item between Gorylande and the corner of the little wood 13 acres and 2 roods

Item upon Copeswent 10 acres 2 roods and 12 perches item in the went from the croft of Roger

Merle to the waye 6 acres 1 rood and 30 perches

Item on the other side of the said way abutting on thone head upon Miklewood and the other head upon Redwente one acre e roods and 4 perches

In this field 137 acres 3 roods a half and half a perch

Parkefield

In Parkfield 10 acres 2 roods a half and 18 perches, In the same field of pasture 2 acres
Summa 12 acres 2 roods a half and 18 perches

Caketon

In wattiswent 6 acres 2 roods and 2 perches
In Lechermerewente 8 acres 1 rood
In Kekiswente 15 acres 3 roods and a half
In Shepwente 12 acre and a half a rood
In Stokemerewente 14 acres a rood a half 2 perches
In the the wente abutting upon Leverhedgeway 13 acres and 21 perches
In the bromewent 19 acres and half a rood
In Levenhedge went 12 acres 2 roods an half and 3 perches
In Netherwente 8 acres a half and 5 perches
In the wechewent 12 acres and 12 perches
In the same field a pasture called bromehead 2 acres and 10 perches
In this field 128 acres 3 roods and 10 perches

Parcell of the meadows there measured in the years aforesaid

In Churchmeadow 4 acres 2 roods and 2 perches
In longmeadow in the piece next the mill 1 acre 2 roods
In the same midlepiece 1 acre 2 perches
In the third piece 1 acre and 32 perches
In the fen meadowe 11 acres 3 roods and 4 perches
No measurement in Mere medowe
In Askettis mesdowe 2 acres 3 roods and 4 perches
In fenn meadowe a pasture containing 3 acres and half a rood

Around AD 1343

Semer would still have had open fields i.e., strips of land shared by the community, with a third of the land laying fallow, not an ideal way of farming.

Over is a slope, hill, ridge, river, bank, and with gang added, it is the hill beside the river, as it is in Ash Street.

Furrowe is a strip of arable land.

Furlong is a furrowe length in an open field.

A balk broadly means access way.

Headland is untilled land at the head of the strips on which the plough turned.

Selion is a cultivated strip in an open field creating a ridge with furrows either side creating drainage about seven yards wide, better known as ridge and furrow.

Glebe is land held by the clergyman.

Oxgang is the land ploughed by an ox in one year.

Acre can be land ploughed by a yoke of oxen in a day or four rods by twenty rods, standardised by Edward 1st as 4840 square yards.

League is usually about three miles, will vary.

Perch, rod, and pole is 16' 6" long and is the depth of a mediaeval hall house.

Wente is difficult, the nearest I get to be a path or field not the answers I hope for.

Goryland is a triangular shaped piece of land.

Lynchets are steps or terraces in the land on a sloping field caused by ploughing or the removal of a hedgerow.

One caldron of coal is one and three-quarter tons.

These explanations give an idea, there are other variations, more so in other parts of the country.

1627 Terrier

Of glebes, lands, meadows, gardens, orchards, and houses belonging to the rectory of Semer. The head mansion that is the rectory with a bakehouse and dairy house adjoining and nearby. A barn with a hay house with stable in the end and another long house for the use of cattle. An orchard, three gardens and the yards, around an acre against the highway leading from Bildeston to Hadleigh and Nedging chapel yard towards the east and on the Glebe to the west, lying between the rectory lands to the south and the way to Semer Hall and chapel yard to the north.

One field called Duffhouse around three and a half acres against the rectory to the east on the lands of Semer Hall to the west and lying between the glebe on the south and the way to Semer Hall to the north. Two parcels of land called the hills containing five acres and a half against the highway from Bildeston to Hadleigh on the east and on the Land of Semer Hall to the west and lying between the lands of the rectory and Beamont belonging to the Hall towards the south and yard of the rectory and Duffhouse field to the north.

Beamont is seven acres against the highway to the east and the Manor lands named Beamont and John Posfords land Called Beamont Hanke to the west and between the Glebe north and south. A field called Roomer of twelve acres by the highway to the east and upon Manor land and the free land of Edw. Bull to the west and between Caughton field to the south and Edw. Bulls land to the north. Bakehouse meadow of one and a half acres against the highway to the east and on Church meadow to the west between the way to Semer Hall on the south and river to the north. Little meadow containing one rood by the highway to the east and Semer Manor to the west between the river on the south and a way leading to these two meadows on the north. Long meadow of one acre and a rood against Semer Hall's land to the east and on the highway to the west and between the way to Hucking Mill on the north and river to the south. Chappell Meadow of one acre and a rood against the Hall's meadow called Extons to the east and on the highway to the west and between the Glebe to the south and river to the north. Oateclose of four acres by Extons meadow and on the meadow belonging to Hucking's Mill and to the east on the Glebe to the west -----.

Chappell field of eleven acres upon the side of Oateclose to the east and on the highway to the west and between Chappell meadow to the north and on Robte Rolfe Esq. land with the Glebe to the south. A field of ten acres and called ten acres against Robto Rolfes' to the east and on the highway to the west between Rectory land on the north and the land of Robt Rolfe Esquire and Edw. Bull's land by the Manor's land to the south. A piece called Plashets of two acres by Richard Chaplins land to the east and Semer Halls land to the west and upon the Glebe land of Nedging to the north and Richard Chaplin's to the south. A piece of half an acre by Richard Chaplin's upon the east the north and south and on the way leading to Huckin Mill on the west. A piece of land lying in Cauhton field having twelve poles upon the lands of Robert Rolfe to the east and on the highway to the west and between the land of Semer Manor upon Great Gough and the land of Mr Robert Rolfe to the north. Land lying in Caughton field of three roodes, against the land of Godsave to the east and upon Wm Chaplains to the west and south and on Edw. Bull' land to the north. One piece of land lying in Caughton field containing one roode against Edw.

Bull called Duck pitt piece to the east and upon the land of Benedict Posforth to the west having a way leading from Bildeston to Kersey through the middle of it between the Manor's land on the south and Benedict Posforth land to the north. Edward Bull's piece called Bakers measuring twelve poles against the Manor's land to the east and on the way leading from Semer Hall to Kersey to the west and lye between the land of Edw. Bull called Baker both north and south.

Jo Brunning Rector
 Edward Bulls mark is a cross within a circle
 Bennet Posforth a cross, both church wardens

10th October 1627

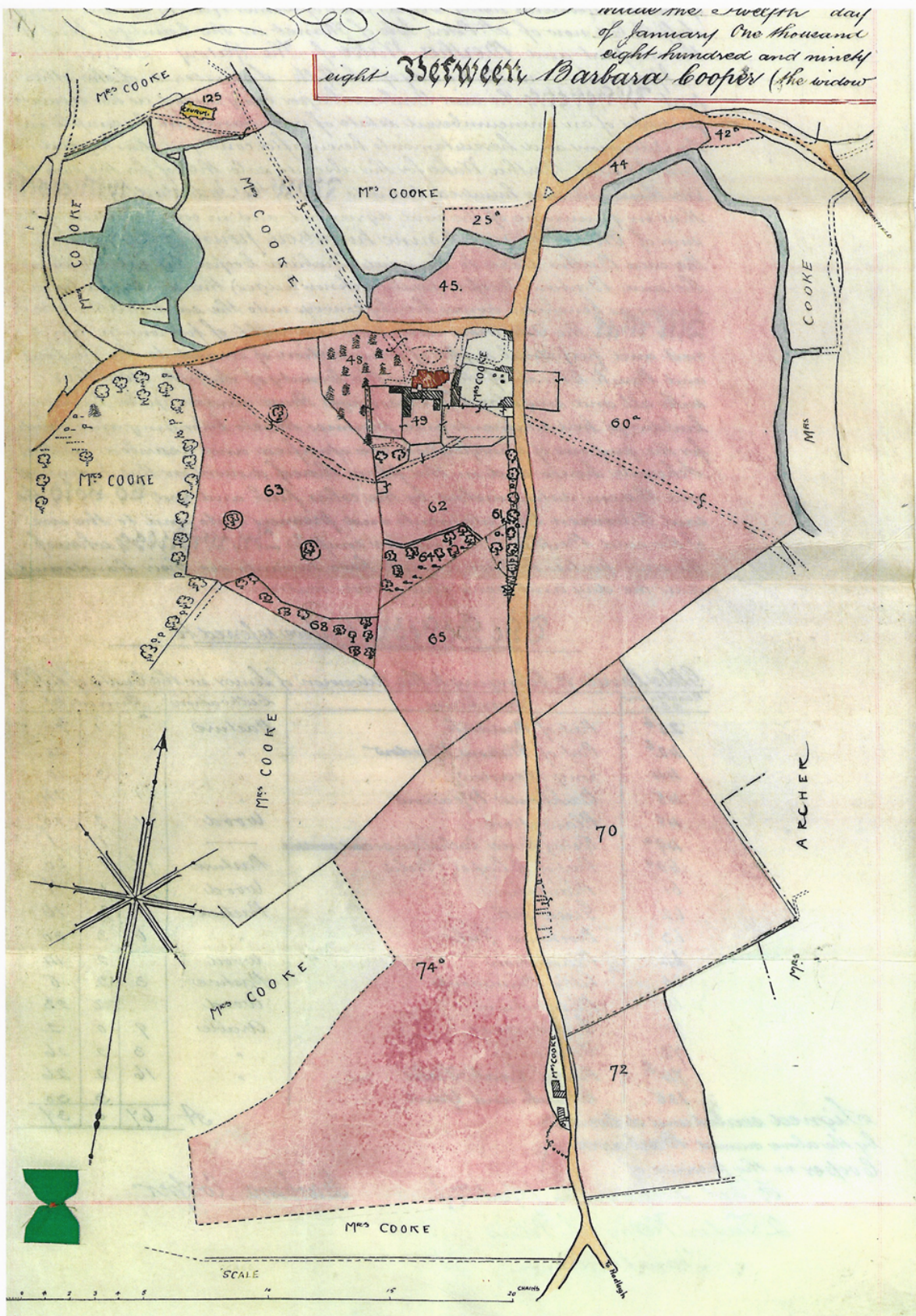
The Schedule above referred to

Glebe lands ye. belonging to the Admouson of Lemer in the County of Suffolke.

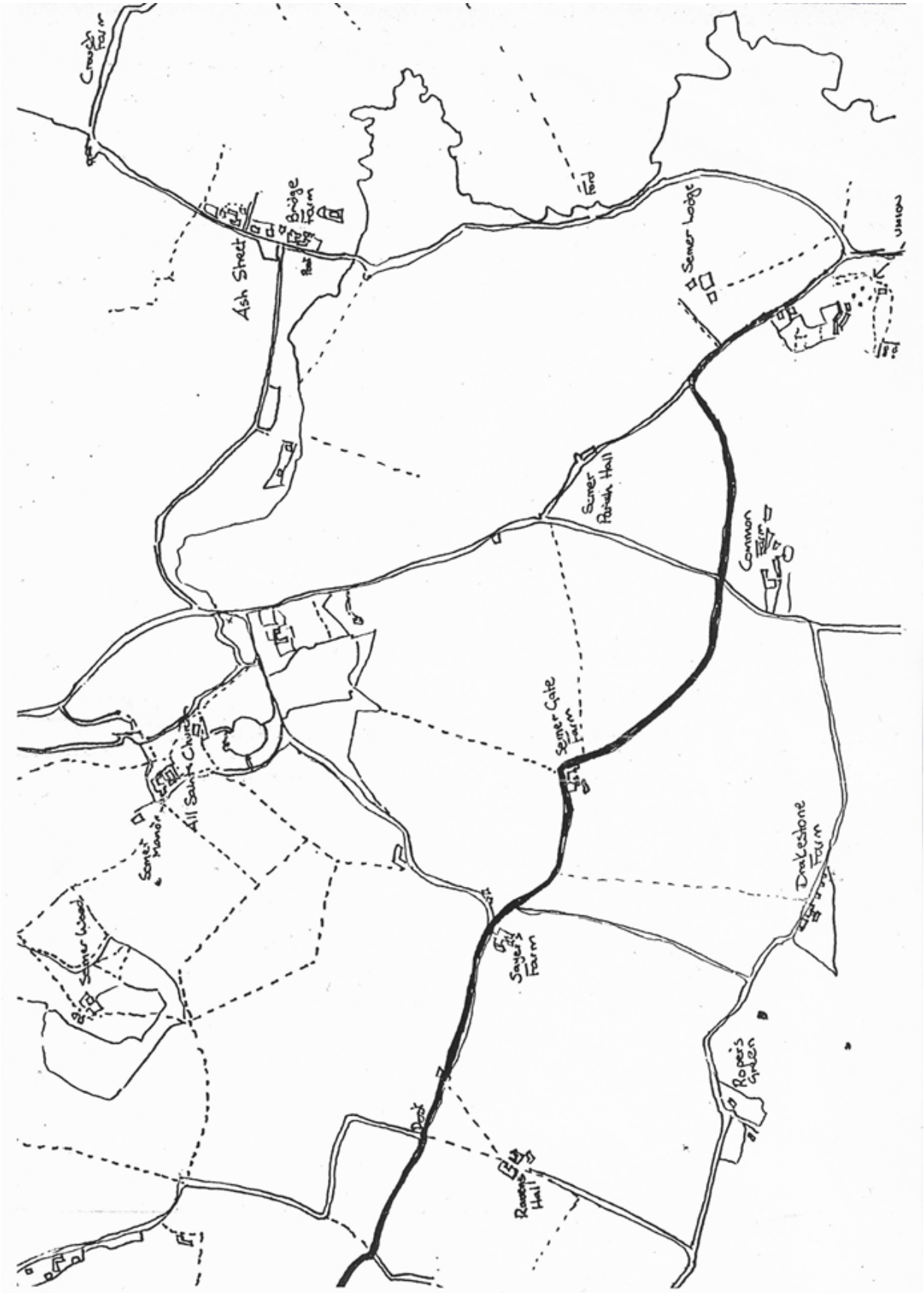
Number on Plan	Description	Cultivation	Quantity
25 ^b	Part of Madderock	Pasture	1 20
42 ^b	Part of Watons Meadow	"	3 28
44	long Meadow	"	1 10
45	Backhouse Meadow.	"	1 24
48	Plantation	Wood	2 25
49 ^a	Rectory House outbuildings and gardens	—	1 1
60 ^a	Part of Chapel Field	Pasture	17 20
61	Plantation	Wood	1 7
62	Green Hill	Pasture	1 16
63	Dovehouse Field	"	3 20
64	Plantation	Wood	2 14
65	Little Beaumonts	Pasture	2 5
68	Plantation	Wood	2 23
70	Eight acres	Arable	9 2
72	Four acres	"	3 26
74 ^b	Part of Great Field	"	16 26
125	Church and Yard	A	3 20
			67 37

Signed sealed and delivered
 by the above named Barbara
 Cooper in the presence of
 Mr. Stephen Waterhouse (Gent^{man})
 Rector of Lemer S. Suffolke

Barbara Cooper



Pictured above: The coloured part of the map is the sixty-seven acres of Glebe, once owned by the rector.



Starting at Nedging Hall and walk the bounds or perambulation, going anti clockwise around the village.

Perambulation 3rd May 1744

I have chosen this date for it is the clearest written document I could find in the record office, written up by Rev Thomas Cooke. All the villagers would be required to walk the bounds, one reason is that the young folk would need to know their village, it is mentioned that the young are struck by the "Rod" to emphasise the point, I assume lightly, elsewhere it is banged on the ground.

We begin our perambulation at an Ashen Tree opposite Nedging Hall Gate abutting on Bildeston Road and take in ye river as far as ye upper corner of Semer Hall High Field meadow, where we cross ye river and go along on ye outside of ye said meadow of Semer Wood to ye road leading from Chelsworth to Ravens Hall and so on till we come opposite to ye bulk in Mr Greens field call Leams where we mark an Elm on ye bank and a Maple at ye other end and take in all that part of ye field that lies on ye south: side of ye said baulk containing about 3 acres. Then we go on in ye said road till we come to a field belonging to Ravens Hall called Little Smythies ye North: Westside of which we take in as far as an Hard Beech tree (hornbeam) being about 4 acres and a half and then go at ye upper end of ye said field and Great Smythies till we come at an Elm which we mark from whence we go down ye land, taking into our bounds about 3 acres of ye said field then through ye hedge into Smythies Garden, about an acre of which we take into our bounds, and mark a tree next ye road which now stands about a rod into our Bounds.

Then we go cross ye road into Great Plandish belonging to Ravens Hall where we have 14 paces on each Border containing about a Rood of Land and much about ye same quantity of Land in Ravens Hall Meadow being a square piece from a Thorn to two Oaks in ye Hedge between ye said Meadow and Plandish. In Little Plandish on ye side next Great Plandish we take in 37 paces containing about half an acre; In ye middle of said field a piece of 50 paces long and 17 wide near ye pond and on ye further side another piece 23 paces wide at ye upper end 101 at ye lower. Then we proceed to Ralphs Green and take in that with Posford's Groves, Hugh Goymers two fields called Birds and his Grove, Vince Ralphs field, all ye farm late of Widow Highams, James Clarkes Groves and so go down a lane leading to Kersey Priory. Then we turn up Hubbs Grove green lane take in ye Widow Robinsons house, barn stable and orchard together with Draikestone Green, from whence we go into James Clarkes Ox Croft all which we take in excepting a piece on ye side next Draikstone Green from ye style to ye Gate opposite Bushey Pitles. Then we go into Francis's Peartree Croft where we take in about 5 roods on ye side next Bushey Pitle down from ye style to an Elm at the lower end.

Then we cross ye road into Francis Stacey's all of which is in Semer and take in ye Border and about 5 ridges being together 13 paces of Gray's Crosslands belonging to Kersey Priory and so go down to ye road leading from Cauton Common to Kersey as far as Clap Gate. From whence we proceed taking in all Studd's lands down to ye road leading from Cauton Common to Hadleigh. Then we take in Joseph Clarke's House, Gardens, Orchard, Barns Stables and Malting office, his Little Common and Parlour Piece, and all Little Cauton excepting one piece of about an acre belonging to Wm Grimwade's Farm. We take in about 4 acres of Jos. Clarks field called fifteen acres where we mark an Oak against ye Common and go from thence to ye Pitt in ye said field and from thence down to an Oak against Blyth's Common field which we mark likewise. All Clay pieces are in Semer excepting one little part of Blyth's piece which is bounded by a Bush. Then we go into Blyth's Common Field part of which we take in (viz) from an Ash that we mark on ye bank next Clay piece to a Sallow next my Gravel pitt.

Then we go into Blyth's Millfield where we take in about five acres from a Tree which we mark in my Gravel pitt and go straight down to ye mill. From ye mill we proceed to Blyth's Meadow against

Bridge field about two acres of which lies in Semer as also all his Camping Close, ye barn only accepted and all his meadow call Bridge Meadow. Then we take in all ye Widow Osbourn's field call Bridge Meadow Lay. From whence we return and take in Blyth's dwelling house, Garden and Malting ye Kiln excepted, through the gutter of which we run a pole and take in about three Roods of his Dove house Close. Then we enter Ben Greens Meadow at ye lower corner next to Blyth's Dove house Close and go on against ye Ditch to an Elm which we mark and so on to an Ash against ye same ditch which we mark likewise. Then up to Fleman's yard where we mark another Elm. Then we take in ye cottage that stands against ye said Meadow with ye yard thereto belonging. Then we enter Widow Osbourn's Malting Meadow which we take in from ye Gripe? to a plumb tree being about 2 acres and a half.

Then we cross ye road into Widow Osbourn's west field all which we take in excepting a little corner of about an acre next ye said road. Then we cross ye same road again into ye said Widow Cotton's about 3 acres of which we take in lying in ye middle. Then we go to Cundy's where we take in ye orchard, and ye house in part running a pole through ye Parlour and taking and so taking in his Hop yard and Meadow. We proceed to Whatfield Hall pound, and so on to Wayer field where we take in 20 ridges containing 101 paces from ye border next ye House down till we come within two poles of ye Bottom. Then we cross ye road into Whatfield Hall Barrards field where we take about 3 acres. Then we go to Widow Grimwade at ye boarded Barn in Elmset where we have 2 acres of Land lying in a field called -----, From whence we return and take in all ye Dairy Lands and all Semer Hall Lands and make an end at Ashen tree where we began.

In a perambulation of 1734, a farm is mentioned at Clap Gate, opposite the end of Shoulder Mutton Lane. One in 1806 states that the Bulk in Leams is ploughed up and Ralphs Green is the entrance to Ravens Hall, which is from the road leading to Ropers Green.



Pictured above: The village sign by the bridge crossing the Brett

ACCOUNT of TYTHES, from the Tythe Book from 1733.

The period covers from 1733 to 1842 when the Rent Charge was introduced in Semer. Traditional tithe before 1836 was based on the tenth of the produce of and nourished by the earth, then were converted into rent charge payments based on the prevailing price of grain, it is all best described as a viper's nest and caused no end of trouble.

Semer was some years behind the Tythe Commutation Act of 1836. One day some many years ago a young couple turned up at my door at Drakestone having been advised by Barry Carter of Whatfield to seek my advice on a map which they had been told to burn with other papers from the manor. Sadly many documents were lost but they gave me the 1838 Tythe Map of Semer, I've not seen them since and can't thank them enough. In April 2023 I put the Tithe Map into the Hadleigh Archive for safe keeping, they have accepted it as on loan.

All tithe charges ceased on 16th October 1963.

Date		£	s	d	Memo
1733	James Clark Agreed great & small tythes Being 4 shillings in the pound per ann.	17	0	0	
1735	Agreed for 6 years to come at £101 per ann.				
1736	Recd. at same time for 2 pieces of Glebe all due at Michmas	2	16	6	
1741	The years composition drops from £101 to £20 per ann.				
1742/3	Tythes A year's rent of Glebe	20	0	0	
1744	For tythes and two pieces of Glebe Up to 1746	22	0	0	
1733	Stephen Studd Great & small tythes per ann.	9	0	0	
1735	Increased to	10	0	0	
1741	Tythes paid in kind Small tythes	4	5	9	
1742	Tythes in kind Small tythes	3	6	0	
1742	Up to 1758	14	0	0	
1760	Up to 1762	14	0	0	
1762	Now Wm Studd holds ye land to 1773	14	0	0	
1733	Stephen Vince	1	1	0	Hill Farm
1735		1	9	0	
1736	Tythe Hay of both his farms 17th Aug. Agreed 2nd crop of Hay in his meadow Herbage on two farms		1	0	
	Tythes of Ravens Hall		7	6	
	Recd. Jan 13th 1736		6	0	
	Tythes of Ravens Hall	1	1	0	
	Recd. Jan 13th 1736	1	15	6	
1737	Tythe of Ravens Hall (to 1752)	1	1	0	
	Tythe of Hill Farm (to 1758) (Hill Fm to J Pryke then to John Cutten in 1770 and then to Watson's 1780 to 1842)	5	0	0	
1733	Mr Green to 1752		9	0	

Date		£	s	d	Memo
1733	Hugh Posford				
	Hay on his borders		2	6	
	Cows adjusted		2	6	
	Orchard		3	0	
	Offerings 2 years		1	0	
1734	Sheep & lambs for his tythe		11	0	
1735	Tythe apples		1	6	
1736	None				
1737	Agreed tythe of 2 cows milk		1	0	
	And of tythe of wood & bushes not taken in kind		4	0	
	Tythe clover not taken in kind	1	0	0	
	Orchard		1	0	
1738	3 coves & 3 calves - orchard flung in. recd. December		15	0	
1739	Agreed for a parcel of tythe hay June 30 th		2	6	
	10 sheep & wool out of half ye year		1	6	
	3 cows & 3 calves		15	0	
	Orchard		1	6	
1740	A tythe pigg in July		1	6	
	2 coves and 1 calf		7	0	
	Orchard		1	6	
1741	1 sheep & 1 lamb		2	3	
	Orchard		1	6	
1742	Agreed for tythes to 1746 Signed Hugh Posford	5	15	0	
1733	Joseph Pittock				
	29 li pf wool sold at 5d per pound		1	2 ½	
	11 lambs		5	6	
	2 cows & 2 calves ye cows were with ye 1st calves		8	6	
	1 pigg due about March or April		2	0	
	Orchard offerings		2	0	
1734	Tythe hay for the year		3	0	
	3 cows & 3 calves		13	6	
	15 weathers		3	9	
	7 yews & 3 lambs		3	6	
	Orchard & offerings		2	0	
1735	3 cows & 3 calves		15	0	
	Wool & 11 lambs		6	6	
	2 ac: quarter turnips		4	6	
	Orchard & offerings		2	6	
1736	Tythe hay		4	0	
	A pigg agreed for		1	6	
	3 coves & 2 calves		14	0	
	Wool & 11 lambs		6	6	
	Orchard & offerings		2	6	
	A years rent in my Glebe in Bakers		2	0	
1737	Tythe of his Borders			6	
	3 cows & 2 calves & one of the cows farrow		12	6	
	Wool & 7 lambs		13	0	

Date		£	s	d	Memo
	Clover seed sold for 14 Guineas to Mr Grimwade		9	5	
	Orchard & offerings		2	6	
1738	June 14th a tythe pigg		2	0	
	3 cows 2 calves 1 cow being farrow		12	6	
	Wool & 6 lambs		2	2	
	Orchard & offerings		2	6	
1739	Agreed hay and Cornfield Borders		1	0	
	Hay in his croft			6	
	Hay of Gunbottles ye field by his house (Near to Sayers Farm)		1	6	Sayers
	2 cows & 2 calves		3	10	
	9 weathers 2 ewes & 2 lambs & ye wool		2	6	
	Orchard offerings				
1740	Tythe pigs		3	6	
	Tythe hay on borders			6	
	3 cows & 3 calves		15	0	
	2 sheep 3 lambs		1	8	
	4 acres turnips		8	0	
	Orchard & offerings		2	6	
1741	Tithe pigg in June		1	6	
	3 cows 2 calves		14	0	
	6 sheep & 6 lambs		3	3	
	Orchard & offerings		2	0	
1742	Hay		2	0	
	2 cowes 2 calves		10	0	
	Orchard & offerings		2	6	
	8 lambs & wool		4	6	
	Then June 19 th 1743 the clause as with Thos Cundy & others above to pay tithe after Harvest he signs (Note: it seems that tighter arrangements are made to collect the tithe, taken over in 1746 by his son William).	6	10	0	
1733	Widow Higham				
	1 li wool			5	
	3 lambs		1	6	
	2 cows one in farrow & 1 calf		7	0	
	Hay & clover agreed for at		4	6	
	Orchard		1	0	
	Offerings			6	
1734	Agreed with Wid Higham for great & small tythes (a goose excepted to be paid in kind for) to 1738	2	5	0	
	Henry Bullard & Wm Halls				
	5 li quarter of wool		2	2	Gate Farm
	28 lambs at 6d per lamb		14	0	
	1 pigg		2	0	
	6 bullocks		12	0	
1734	Tythe & hay in Crabsell's		1	0	
	Wool 68 li		2	3	
	24 lambs		12	0	
	A coombe of pease		11	0	

Date		£	s	d	Memo
1735	Agreed with the above and both signed for. Tythe to be 9 guineas per year to 1744	9	9	0	
1746	to 1756	9	9	0	
1757	to 1764	10	0	0	
	(Would appear to be Semer Gate Fm, to Thos Marriott till 1770 and then to Wm Partridge)				
1733	Robt Osbourn				
	Agreed with him for great & small tythes being 4s per pound per ann. to 1746 (then Wid Osborne)	2	16	0	
1733	Hugh Goymer				
	Agreed with him for great & small tythes to 1735 to 1735	1	2	0	
1736	Tythes took in kind this year to 1738				
1739	Tythe hay on a Cornfield Border agreed for reed Saml Turner for his tythes for 3 years at 16s 0d		16	0	
	Thomas Glanfield				
	Agreed with him for great & small tythes per ann. to 1739	2	2	0	
	Now Joh Blyth to 1750	2	2	0	
1733	Wm Grimwade				
	Agreed ye hay in his meadow		3	0	
	Oblations for 2 years		1	0	
1734	Tythes		3	6	
1736	Recd. a years rent of a piece of meadowing And then up to 1749		15	0	
1733	Robert Edwards				
	4 cows & 3 calves) His cows fed partly in Whatfield	1	7	0	
	5 acres of Turnips) & ye turnips failing. Offerings)		15	0	
	Orchard paid in kind)				
	Recd. of him				
1734	Now Robt Death to 1740	2	6	0	
1733	Joh Betts				Mill
	Agreed with him for his mill & other small tythes per ann. Up to 1742		18	0	
1743	Feb 13th recd. of him & Cobbin & B Green (It seems that for a short while these three men share the costs)		18	0	
1733	Joh Smith to 1745		5	0	
1733	Mr Ruffle of Whatfield Hall				What Hall
	Tythes		5	0	
1733	Robt Hayward				
	Great & small tythes to 1740	1	8	0	
1733	Wid Grimwade of Elmsheath		3	0	
1738	By ye hand of Mr Clubb for 3 years gathered by him for me of ye Wid G farm		7	6	
1740	Tythe I took in kind & had 2 coombs of Barley				
1741	Taken in kind				

Date		£	s	d	Memo
1742	Taken in kind & for herbage to 1745		1	6	
1735	Wm Ruffell				
	Agreed tythes for the year & let him a piece of Glebe land in Felgate's Baker's at 2s per ann.	1	10	0	
			2	0	
1737	A tythe pigg		2	0	
	Of him for his cow being a soory one		2	0	
1738	For his cow & pease		4	0	
1739/40	Recd. nothing				
1741	For his cow being farrow		2	0	
1742	2 ac: of turnips		4	0	
1743	1 ac: of turnips & feed		3	0	
1744	Agreed with Wid Ruffle for her tythes this year for ye sume of		10	0	
1745	Tythes		6	0	
1736	Joseph Robinson				
	Agreed with him for great & small tythes for 3 years to come ye first for 3 li ye other 2 years 3 guineas each	3	3	0	
1739	Agreed for his tythes for 6 years to come at 3 li 10s per year Up to 1742	3	10	0	
1743	Now ye Widow Robinson to 1773	3	10	0	
1736	Wm Pittock		13	0	
1737	A years rent of ye piece of Glebe in Bakers for his wool & 10 weathers		2	0	
			2	6	
1738	The Glebe in Bakers		2	0	
	7 Weathers		1	9	
	Wool			6	
	3 lambs		1	6	
	A farrow cow		2	0	
1739	Agreed a parcel of tythe hay		2	0	
	10 weathers & wool		3	3	
	Rent for Bakers in the Glebe		2	0	
1740	Agreed for a parcel of tythe clover		2	0	
	Tythe hay			6	
	Turnips 3 acres		6	0	
	Rent at Bakers		2	0	
1741	Hay & clover		2	6	
	Cow & calf		5	0	
	Rent at Bakers		2	0	
	Offerings			6	
1742	Cow & calf		5	0	
	Clover & offerings		2	6	
1743	to 1745	1	11	6	
1746	Wm Pittock for lands late in occupation of his father Jos Pittock he makes his mark	8	0	0	
	And then he pays for the late Hugh Posford	5	15	0	

Date		£	s	d	Memo
1747	Tythes or a years composition to 1759	13	15	0	
	Now Smith & Arthey to 1766	13	15	0	
1738	Rich. Francis tythes to 1758		16	0	
	Now Thos Everetts				
1739	George Whymark tythes to 1758	2	10	0	
1741	Thos Cundy				
	Then agreed with Thos Cooke Rector of Semer for my tythes at two pounds ten shillings per year during ye term of six years which sumes I promise to pay him yearly twenty days after Harvest witness my hand Signed Thos Cundy to 1746	2	10	0	
1742	Mr Newmans				Hall
	A years composition to 1759	29	0	0	
	Now Wm Studd's (see below)				
1742	Joseph Clark to 1750	1	16	0	
1751	to 1759	1	10	0	
1762		2	6	0	
1762	For Home Tythes				
	For late Edw Pittocks				
	For the ----- 4 0 to 1772	2	6	0	
1773	to 1786	3	3	0	
	He is described as a Gentleman				
1743	Benj Green to 1756		6	0	
	Now John Blyth's				
1745	Joh Porter's to 1764	1	1	0	
1743	Thomas Cobbing	1	1	0	Mill
	Agreed to pay tythe of Oaking Mill & ye meadows there unto to 1748 he signs				
1746	Samuel Cutten's				
	For Oaking Mill to 1773	1	1	0	
1773	For the mill and meadows to 1801	1	11	6	
1802	to 1807	2	2	0	
1810	to 1828	3	0	0	
1829	Wm Cutten Miller to 1835	3	0	0	
	6 years arrear of tithe paid by Geo Mumford in Mar 6th 1843	18	0	0	
1842	Put in a distress for a years rent charge	2	1	1	
1746	Edw. Pittock to 1758		12	0	
1761	Now Joseph Clark holds ye land (see above)	1	16	0	
1746	Wm. Haste to 1773		5	0	
1774	to 1789		6	0	
1790	Now William Grimwade to 1792		6	0	
1793	Now Abraham Dakin to 1795		6	0	
1746	Edw. Wood to 1753		1	6	
1754	to 1756		8	6	
1747	May 9th Mr James Clark	4	0	0	
	For ye tythes at Drakeston (then Drakeston crossed out) to 1752				

Date		£	s	d	Memo
1753	Geo Wymark to 1761 Now Clarke Woods holds ye land	4	0	0	
1747	Abraham Dakin Tythes for his farm and 2 pieces of Glebe Farm to 1761 signed Glebe	16	0	0	
		2	16	6	
1761	Agreed for the tythes of his farm from year to year at ye rate of 16 li and one load of good Wheat Straw & he is to bush his Wheat & Barley & Oat Stubbles up to the Sickle & Dew Rake also the said Mr Dakin is to hold two pieces of Glebe at 2 li 16s 6d annually to 1773	18	16	6	
1773	to 1781	19	19	0	
1782	Including £3 1 0 for 2 pieces of glebe to 1795	23	0	0	
1747	Wid Osborn (see Robt Osbourne) Tythes for her farm at 3 li & for her own land 1 li 10s to 1765	4	10	0	
1767	to 1773 (then Thos Osborne to 1785 then Wid Osborne to 1792 then Thos Grimwood to 1803)	4	14	6	
1747	Saml. Cooper of Whatfield for his lands in my Parish in ye occupation of Thos Cundy to 1766	1	5	0	
1747	James Deeks of Whatfield for his lands in my Parish to 1769 to 1784		5	0	
			6	0	
1747	Joh Welham of Kersey to 1755		7	0	
1747	Wid Roper's to 1749		1	0	
1747	Stephen Vince Ravens Hall Hill Farm to 1752 Hill farm only to 1758	1	1	0	
		5	8	0	Hill Farm
		5	8	0	
1760	Now James Pryke's to 1769	5	0	0	
1751	Mr Blyths to 1758	2	2	0	
1758	Also for late Ben Green 6s 0d to 1764 Now Robt Osborns	2	8	0	
1753	Mr Greens to 1765		9	0	
1767	to 1773		10	6	
1753	Joseph Arthy for his tythe at Ravens Hall Farm to 1771	1	0	0	
1756	William Ruffle to 1758		5	0	
1758	John Martins to 1766		7	0	
1768	to 1773		7	6	
1774	to 1776		8	0	
1758	Robert Waner to 1773		5	0	
1774	to 1775		7	6	
1758	George Whymark to 1761 For Mr Keddingtons Farm Now Clark Woods holds ye land	2	10	0	
1762	Clark Woods of Kersey				

Date		£	s	d	Memo
	For the lands which were late occupation of George Whymark except woodlands belonging to Joseph Clarke paying £8 8 0d and one load of good Wheat Straw signed Clarke Woods	8	0	0	
1773	Witness Mary Fiske and signed Thos Cooke to 1773 to 1779	11	11	0	
1780	Tythes reduced to 8 8 0 having left Mr Kedingtons Farm to 1800	8	8	0	
1801	To pay in future £9 9 0 to fetch three Chaldron of Coals & to send a turkey at Christmas to 1805	9	9	0	
1810		11	0	0	
1820		12	12	0	
1822	to 1823	9	9	0	
1759	Thomas Everetts to 1766	1	0	0	
1767	Now Solomon Gusterson's to 1773 Now Mr Partridges	1	1	0	
	1760 William Studd's to 1762 Now Wm Watson holds ye land	27	0	0	Hall
1762	to 1773	27	0	0	
1773	to 1794	37	0	0	
1795	Semer Hall 37 Hill Farm 5	42	0	0	
1796	To pay in future for Semer Hall £50, Hill Farm £6 Yet he only pays £50 to 1801 and then £55 to 1806, in future £60				
1807	To fetch 2 chaldron of Coals	60	0	0	
1810		75	0	0	
1815	£4 deducted for the wood	71	0	0	
1818	In future £70 of France Field 1£ being allowed for upper part	70	0	0	
1821		63	0	0	
1822		56	0	0	
1824	Now Philip Hicks next year to be £70 0 0				
1825	to 1832	66	0	0	
1833	Now Thos Green	66	0	0	
1842	Rent charge began (a loose note says £66 per year to bring 2 chaldrons of Coal & a Turkey at Christmas) January 1st 1773 An account of Tythe Geese to be delivered to me yearly as Rector viz. Wm Watson paid Wm Robinson paid Abra Daking Thos Osborn paid Thos Smith paid Jos Arthey paid Wm Studd a turkey Thos Studd 2 ducks or a goose paid Horsenaile a turkey added to his rent	85	2	7	

Date		£	s	d	Memo
	Harrington a turkey and capons				
	Thos Marriotts to 1766	10	0	0	
1767	to 1770	14	0	0	
	Now William Partridge's				
1767	John Coopers to 1769	1	5	0	
1770	to 1774	1	7	0	
1775	to 1798	1	10	0	
1799	Carried to Mr Dakins account				
1767	John Smith's to 1773	8	0	0	
1767	Joshua Arthey to 1769	5	15	0	
1770	Now Thomas Studds to 1773	6	0	0	
1770	John Cutten to 1776	5	0	0	
1780	William Watson taking over the tythes of Hill Farm lately in the occupation of John Cutten to 1794	5	0	0	
1797	Account of Tythe at Hill Farm	6	0	0	Hill Farm
1802		6	10	0	
1810	to 1820	8	8	0	
1821		7	7	0	
1822		7	0	0	
1825		8	0	0	
1842	Recd a years rent charge	10	1	0	
1771	William Partridge Semer Farm to 1774				Gate Farm
1774	Recd for Drakestone Farm	1	8	0	Drakeston
1776	Semer Farm at 14 0 0 Drakestone at 1 8 0 Whatfield Hall at 7s 6d				What Hall
	So far from 1776 to 1786 and to 1793	15	15	6	
1793	Now John Green to pay in addition to the above for 14 acres Glebe at 18s = 12 12 0 & part of Hill farm tythe 13 acres at 4 = 2 12 0	15	4	0	Hill Farm
1794	Recd a years tythe due Michmas last	15	15	6	
	Recd a years tythe for Glebe & Hill Farm	15	4	0	
1795	Agreed to pay in future for his farm £20 0 0 For Glebe & part of Hill Farm £15 4 0 to 1800	35	4	0	
1794	For land in Wayer Field to 1800		7	6	
1801	To pay in future in Wayer Field 30 acres Drakeston Farm 6 15 0 =	7	2	6	
1802	Drakeston Late Gusterson				
	Whatfield Hall 13 6 6 to 1804 =	9	0	0	
1805	To add in future for Crouch Land 1 14 0	10	14	0	Crouch
1810	to 1811	14	0	0	
1812	Mrs Partridge 30a	14	0	0	
1819	Now Wm Green £13 15 0 having left Whatfield Hall	13	15	0	
1823	Now Mrs Partridge Crouch 7 acres Late Gusterson 7 acres----- added to Thos Green's - leaves 36 acres tithe £7 10 0	7	10	0	

Date		£	s	d	Memo
1825	to 1831	8	0	0	
1832	Mr Partridge to 1841 "No mention of 1842" a note says 7 acres added to Common Farm 21 acres added to R Smiths Farm 17 acres in my own occupation	8	0	0	
1771	Joshua Arthey to 1773	1	1	0	
	Joshua Arthey of Lindsey to 1801	1	11	6	
1802	to 1804 Now Goddard	2	18	6	
1805	Mrs Arthey		10	0	
1815			12	0	
1819	In my own occupation in future J Hayward (see p 13)				
1773	Thomas Smith (held from Henry Dickenson) Also that he shall take the Great & Small Tythes arising from 17 acres of Common Land which he holds of Mr Meadows to 1779	9	9	0	
		2	19	6	Common
1780	Thomas Smith of Kersey on lands in his occupation belonging to Henry Dickinson paying £9 9 0 also on land belonging to John Meadows Theobald Esq for £2 16 0 to 1791	12	5	6	
1792	to 1794	12	5	0	
1795	To pay in future for Mr Dickensons Farm For late Thos Studds Farm	20	0	0	
1796	to 1801	20	0	0	
1802	Mr Dickensons's Farm Late Thos Studd's to 1809	21	0	0	
1810	to 1811	24	0	0	
1812	Mr Smith's 85a (Richard)	24	0	0	
1821		20	0	0	
1825		24	0	0	
1830	Also for Drakeston Farm	5	10	0	Drakeston
1831	to 1841	29	10	0	
1842	16 acres taken from R Smith in my own occupation & 21 acres added to R Smith from Drakestone Farm Rent charge	40	12	10	
1765	Robert Sparrow of Lindsey to 1773	1	4	0	
1773		1	8	0	
	Lands in Semer except Bird Grove to 1785				
1773	William Studd to 1779	21	0	0	
1780	to 1789 Now John Grimwade	18	12	0	
		34	0	0	
1789	John Grimwade is to pay 18 pounds a year for the tythe of his farm Signed to 1794	18	0	0	
1795	To pay in future for Home Farm Drakestone Farm 22 acres of Common Land Thomas Studd's land on the common to 1801	27	7	0	Drakeston Common

Date		£	s	d	Memo	
1802	Home Farm		24	5	6	
	Drakeston		4	10	0	
	Mr Newmans		3	17	0	
	6 a late Studd's to 1805	34	0	0		
1773	Thomas Studd to 1779	7	7	0		
1780	Plus £3 12 0 for the farm which Rev Cooke purchased from Mrs Kedington	3	12	0		
1786	£10 19 0 yearly to 1795	10	19	0		
1789	Thos Studd is to pay one pound ten shillings a year for the tythes of his brothers land on the Common to 1795	1	10	0		
1773	Thos Osborn to 1785	5	5	0		
1773	George Hayward And suffering the said Thos Cooke to appointe somebody to bush his stables as soon as the corn is carried out from the same to 1785	3	3	0		
1774	Sarah Robinson to 1786	5	5	0		
1788	William Robinson to 1799	5	5	0		
1800		6	6	0		
1774	Wm Green to 1777 Now Philip Hicks to 1801		12	6		
1802	to 1807		14	0		
08	Now Lamb		18	0		
1810		1	0	0		
1810		1	2	6		
1777	Thos Shearcroft to 1789 8s 0d the first year		10	0		
1790	Richard Newman late Sheercrofts to 1794		10	0		
1781	Jan 5th The House of Industry to 1798 and to 1809	2	9	0		
1810	to 1821	4	4	0		
1822		3	10	0		
1825		4	0	0		
1835		3	0	0		
1842	Now rent charge	3	3	9		
1785	Mr Nunn to 1798		6	0		
1799	to 1804		8	0		
1786	Widow Osborn's to 1792	5	5	0		
1793	Now Thos Grimwood's to 1800	5	5	0		
1801	to 1802	6	6	0		
	Crouch Land being occupied by Mr Partridge	5	10	0		
1786	Thos Gardiner's to 1792	1	8	0		
1792	Also recd the tythe of the wood to 1773	1	5	0		
1794	Now Newman	1	8	0		
1795	3 acres of Common land 10 acres Birds to 1798	3	0	0		
1799	----- to pay in future £3 13 6 including the woodland "take broke up" (could this be the reduction of Semer Wood)					
1787	John Clarke's to 1794	3	0	0		

Date		£	s	d	Memo
1795	Now Mr Archer to 1801	3	10	0	
1802	to 1809	4	0	0	
1810		4	14	6	
1812		6	6	0	
1817		6	15	0	
1820	To pay in future £6 there appearing by Wrights measuring to be only 16ac and 31p in Semer				
1821		5	8	0	
1822		4	8	0	
1824	For Homeshall 12 acres	3	6	0	
	Part of late Clark Woods 26 acres	7	4	0	
	Drakeston Grove not included	10	10	0	
1825	For Homeshall & late Rashbrook	6	18	0	
1826		3	6	0	
1827		3	9	0	Homeshall
1828	Account of tithe for Homeshall 12a				
	On the Common 4a	4	12	0	
1830	Tithe for Homeshall	3	6	0	
1832	For Drakestone late Vince	2	0	0	
1833		5	6	0	
1836	Home Farm				
	Street late Richardson	8	16	0	Street Fm
1838	The Street Farm let to Benj Smith	7	3	0	
1842	Rent charge	9	14	2	
1800	Mr Newmans account of tythe to 1801	3	13	6	
1802	to 1810	4	0	0	
1811	to 1815	5	5	0	
1822		4	10	0	
1824	15 acres	4	4	0	
1825		4	10	0	
1828	acres 40 now to 1841	12	0	0	
1796	John Dakin				
	Glebe Tythe	23	4	0	
	Glebe	3	3	0	
	Tythe of land to ye cottage	6	0		
1800	Tythe for farm	23	16	0	
	Tythe to ye cottage	6	0		
	Tythe to lands late Cooper	1	11	6	
1801	Farm	27	0	0	
	Coopers Land	2	0	0	
	Cottage	6	0		
1807	In future 30 0 0 to 1811	30	0	0	
1812	135a	40	0	0	
1821		36	0	0	
1822		33	0	0	
1825	to 1841	38	0	0	

Date		£	s	d	Memo
1842	Rent charge	48	1	7	
	Now Henry Sallows				
1801	Wm Burman's account of Tythe & Glebe				Home Farm
	Tythe of Home Farm	20	0	0	
	13 acres of Hill Farm	2	12	0	
	2 acres of Glebe	1	16	0	
1802	Home Farm	22	5	6	
	Part of Hill Farm	2	12	0	
	Glebe	1	16	0	
1805		26	0	0	
1810	to 1816	33	0	0	
1817		33	5	0	
1821		30	0	0	
1822	Thos Green				
	above account		27	0	0
	Crouch 7 acres in future Wm Johnson				
	Late Gusterson 7 acres				
	14 acres		3	10	0
	Farm 108 acres				
	His own 7				
	115	30	10	0	
1825		33	0	0	
1833	Wm Green to 1835	33	0	0	
1842	Rent Charge	40	5	6	
1805	Mrs Goddard	3	3	0	
1807		3	1	0	
1809		3	6	0	
1810		3	10	0	
1814	Now Chandter ? to pay in future	4	10	0	
1815		4	4	0	
1817		4	0	0	
1821		3	12	0	
1822		3	0	0	
1823	In future Mathews acres 12 to 1825	3	0	0	Ravens Hall
1826	to 1841	3	10	0	
1842	Rent charge	4	5	10	
1805	John Grimwood's	5	10	0	
1822		6	0	0	
1825	to 1827	7	0	0	
1805	Mr Proctors		8	0	
1810			10	6	
1817		1	1	0	
1822	Now Kistruck 2a		9	0	
1825	to 1832		10	0	
	Now Warren		10	0	

Date		£	s	d	Memo
1842	Rent charge		11	7	
1806	John Grimwood's (A separate entry)	34	0	0	
1810		37	0	0	
1813		40	0	0	
1821		36	0	0	
1822		33	0	0	
1824		41	10	0	
1825		44	0	0	
1828		33	15	0	
1786	Richard Grimwood's to 1800	3	0	0	
1802	to 1807	3	12	0	
1808	Richard Grimwood's 17 ? acres	3	12	0	
1810		4	10	0	
1812	Now Stowe to pay & bring 1.5 chaldron of coal	5	10	0	
1817	14 of the above to be added to Mr Burman's account for 2 acres paid to his lands in Semer 9 of the above 14 to be added to Mr Archer's account for 1.25 acres Paid to his lands	4	16	0	
1823	In future Rushbrook to 1824	3	12	0	
1826	Thos Richardson late Rashbrook 16a				
1828	Addition 12a on Common £3 6 0 Common				
1829	= 7 10 0 With 4a more on Common to 1835	8	16	0	
1835	In future Mr Archer (no tithe till 1838)				
1838	Now let to Benj Smith without the land on the common	4	19	0	
1842	Now rent charge(not sure that the above follow on)	4	18	10	
1809	Ramsey's 4a	1	0	0	
1810		1	2	6	Green
1821		1	0	0	
1822			18	0	
1826		1	0	0	
1842	Rent charge	1	9	3	
1810	John Hayward's 22a	6	0	0	
1820	In future £5 10 0 Beaumont Hawke being given up in exchange for late Arthey's to 1829	5	10	0	
1813	Mr Rushe's 4a	1	8	0	
1822		1	0	0	
1825	to 1835	1	4	0	
1836	Mr Rushes acct of tithe for Swallows	1	4	0	
1842		1	12	5	
1819	William Ranson Whatfield Hall 3.5 acres	1	1	0	
1822			18	0	
1825		1	0	0	

Date		£	s	d	Memo
1829	Andrews	1	0	0	
1842	Recd a years rent charge	1	5	6	
1822	Mr Dakings 11a	2	10	0	
1825		3	0	0	
1840	Now R Daking	3	0	0	
1842	Recd a years Rent charge	6	7	6	
1825	Vince for Drakestone 8 (presume acres)		18	0	
1827		1	0	0	
1828		1	10	0	
1829	was to have been increased to £2 0 0 but being a bad year	1	10	0	
1830		2	0	0	
1831	In future Mr Archer	2	0	0	
1836	Now Robert Vince	2	0	0	
1840		2	10	0	
1842	Rent charge Mr Archer	3	19	0	
1826	Wm Johnson	2	2	0	
1840		2	5	0	
1842	Rent charge	2	15	3	
1825	Ives account to 1841	7	7	0	
1842	Rent charge	9	0	2	
1829	Mr Edward Frost's				
	Home Farm 110a	33	0	0	Home Fm
	On the Common 3.5a	1	0	0	
1840	Now J Daking	34	0	0	
1841	Now S Marshall with 7 acres added from Drakeston farm (He marries Caroline Daking, daughter of John & Mercy)	34	0	0	
1842	Rent Charge	42	7	5	
1828	Account of tithe for Semer Wood to 1841	4	10	0	Wood
1842	Rent charge	5	9	10	
1828	Edward Richardson's	7	7	0	
1842	Rent charge	10	9	5	
1842	Philip Arthey (Shoemaker at Ropers Green)		3	1	
	W Green		2	4	
	Sam Leman		2	1	
	John Sage		2	4	
	Wm Goldacre		2	1	
	John Green		4	2	

It is stated in these documents that Semer Wood measured 54 acres, also that they may digging it up. In other agreements I found there are references to land that had belonged to Rev. Charles Cooke, in two and a half acres in Gunbottles on the common, and in one and a quarter acre in Rye Hill be used as allotments at a cost of twenty five shillings an acre for a period of eight years and that

one and a quarter acres of land in West Field once owned by George Cooke Snr. be let out for allotments at the same rent.

At a parish council meeting it was resolved that the allotments be fenced with wire netting, this appeared to put on hold, and it was later decided to make a two-foot-high bank and plant a quick hedge and that the work be put out at 6d per rod.



Pictured above: Cottage in Semer wood